

CREATE activities for early career researchers in 2024

Maya Braun

Ghent University, Belgium

Alea Ruf

University of Vienna, Austria

Louise Foley

University of Limerick, Ireland

Carolina Silva

Trinity College Dublin, Ireland

Christine Emmer

University of Mannheim, Germany

Melanie Bamert

University of Bern, Switzerland

The Collaborative Research And Training in the EHPS (CREATE) is a standing network of the European Health Psychology Society, organized by and for Early Career Researchers. Our aim is to connect and support researchers within the EHPS from the start of their academic careers.

Who are we?

All CREATE activities are organised by the

elected CREATE executive committee, which consists of six members. Since the last EHPS conference in Bremen, we have welcomed three new members in the team, so please allow us to introduce ourselves:

Chairperson: Maya Braun (Ghent University, Belgium)

Secretary: Alea Ruf (University of Vienna, Austria)

Treasurer: Louise Foley (University of Limerick, Ireland)

Application Manager: Carolina Silva (Trinity College Dublin, Ireland)

Grant Master and Liaison Officer: Christine Emmer (University of Mannheim, Germany)

Public Communications Manager: Melanie Bamert (University of Bern, Switzerland).

Find more details of the Executive Committee and their roles [here](#).

What do we do?

CREATE offers learning and networking opportunities for Early Career Researchers, both throughout the year and during the annual EHPS conference. CREATE activities are open to all Early Career Researchers interested in health psychology. To take part in activities during the conference, or to join the CREATE Executive Committee, individuals need to be EHPS members. All other CREATE activities are open for all.



Image 1: The CREATE Executive Committee at the Winter Meeting in Ghent, 2024. From left to right: Louise Foley, Alea Ruf, Melanie Bamert, Christine Emmer, Carolina Silva, Maya Braun.

EHPS 2024 in Cascais, Portugal

During the EHPS conference, we organize an annual pre-conference workshop, 'Meet The Expert' sessions and the Early Career Researcher Spotlight talks during the conference.

Apply now: [CREATE pre-conference workshop](#).

The CREATE committee organizes an interactive 2-day workshop each year immediately prior to the annual EHPS conference. These workshops are led by experts within the field of health psychology, providing opportunities and support to enhance knowledge and skills. The workshop also provides an important opportunity to get to know and connect with peers. The CREATE workshop is the perfect place for networking, as the program also includes a CREATE dinner, a city tour, and social activities spread throughout the workshop. Previous workshops have focused on topics such as

science communication, digital health, and systematic reviews & meta-analysis. You can find reports on previous CREATE pre-conference workshops written by past participants here: [2021](#), [2022](#), [2023](#).

We are happy to announce that this year's workshop will focus on participatory research – an important topic that has been on top of our list for a while based on feedback from CREATE members! The workshop will be facilitated by the fantastic Anna Levke Brütt and Elspeth Mathie, and takes place on Monday 1st and the morning of Tuesday 2nd of September. Find more information on the CREATE workshop and apply [here](#).

Empowering Collaboration: Patient and Public Involvement in Health Research



CREATE
Early Career Researcher
Pre Conference Workshop

Sun 1st September 2024: Social Activity (Afternoon)
Mon 2nd September 2024: Workshop (Full day)
Tue 3rd September 2024: Workshop (Half day)

Workshop fee:
 €140 (€100 if eligible for reduced fee)

More info and registration:
www.ehps.net/create_or_2024.ehps.net/create




Sessions delivered by

Dr. Anna Levke Brütt
 Department of Medical Psychology,
 University Medical Center
 Hamburg-Eppendorf

Dr. Elspeth Mathie
 Centre for Research in Public Health
 and Community Care (CRIPACC),
 University of Hertfordshire




CREATE is a subdivision of the European Health Psychology Society, promoting education and collaboration for early career researchers in the field. The workshop takes place immediately prior to the annual EHPS conference

Image 2: Flyer for the annual pre-conference workshop for the EHPS 2024 in Cascais, Portugal. Icons from Canva under Free Content License.

Apply in July 2024: Meet the Expert.

Every year, CREATE organizes 'Meet The Expert' sessions at the EHPS conference. In these sessions, the keynote speakers take time to meet with a small group of early career researchers over a cup of coffee. We are happy to share that some of this year's keynote speakers have already agreed to take part in the Meet The Expert sessions of this year! Find more information on them [here](#). Learn more about Meet the Expert [here](#).

Early Career Researcher (ECR) Spotlight Talks

For the second year in a row, CREATE organizes the ECR Spotlight talks at EHPS 2024 in Cascais. These talks are a format for and by early career researchers, where presenters summarize their research in only 5 minutes. More information on the Spotlight talks can be found [here](#). Submission for this year are closed already. If you missed it, we hope to see you in the audience!

MEET THE experts

At the EHPS2024 conference in
Cascais, Portugal



Paschal Sheeran

Professor at University of North
Carolina at Chapel Hill, USA

- The intention-behavior 'gap' and use of implementation intentions
- Using meta-analysis to assess change in health-related intentions and behavior
- Non-conscious routes to action and the self-regulation of implicit influence



Amanda Daley

Professor at Loughborough University, UK

- Developing physical activity and weight management interventions in primary care and community health settings
- Training health care professionals to deliver lifestyle interventions with consultations
- Lifestyle interventions in pregnant and postnatal women



Jeremy Grimshaw

Professor at University of Ottawa,
Canada

- Evaluation of interventions (experimental and quasi experimental methods, evidence synthesis)
- Knowledge translation and implementation science
- Health professional behavior change



For more info and registration: www.ehps.net/create or 2024.ehps.net/create

Image 3: Flyer for Meet The Expert at EHPS 2024 in Cascais, Portugal.

Throughout the year

Throughout the year we will be connecting early career researchers and share opportunities via social media. We are also organizing additional webinars to support and share knowledge between CREATE members in a virtual space. This year, we are focusing on fostering collaborations with other EHPS groups – that way, we can share expertise throughout EHPS and introduce early career researchers to those great networks.

To start with, we have organized a webinar together with the Open Science Special Interest Group (SIG) on open data and open code, facilitated by James Green and Gjalt-Jorn Peters. Open science is a topic that is particularly relevant to early career researchers. Promising collaborations are in preparation with other SIGs as well, including the Digital Health SIG. Keep an eye on the EHPS newsletter, or any of our communication channels! Finally, shortened and updated versions of last year's webinars on successfully applying for a CREATE grant (see below) and making the best out of EHPS will be uploaded to the EHPS website. Find them and any additional information on the upcoming webinars here.

Funding

CREATE also offers funding opportunities for the CREATE workshop registration, EHPS conference registration, accommodation and travel. Find out more about eligibility and the selection process here: <https://ehps.net/grants/>. Would you like more information about the grants that are available, and how to apply? Our very own Grants Officer Christine Emmer has recorded a short video explaining the grants, and sharing some tips for your application – including examples from

previous grant awardees! Find it [here](#).

We look forward to connecting with you soon!

How to get involved in CREATE?

For more information about what activities we are running, and how to take part, check out our website here: <https://ehps.net/create/>

Want to keep up to date?

You're in luck, there are many ways!

Keep an eye on the [website](#)!

Follow us on X ([@EHPSCreators](#)) or Bluesky ([@ehpscreators.bsky.social](#))

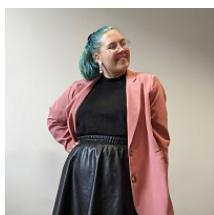
Join our WhatsApp group by filling in the [sign-up form](#).

Join our mailing list [here](#) or keep an eye on the EHPS newsletter.

Copyright Statement

Copyright 2024 European Health Psychology Society. All rights reserved.

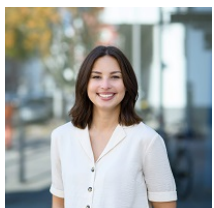
All text, images, and content in this article are copyrighted by European Health Psychology Society. Images are licensed under CC BY-NC. You may share and adapt them for non-commercial use with proper credit.



Maya Braun
Ghent University, Belgium
maya.braun@ugent.be



Melanie Bamert
University of Bern, Switzerland
melanie.bamert@unibe.ch



Christine Emmer
University of Mannheim, Germany
emmer@uni-mannheim.de



Carolina C. Silva
Trinity College Dublin, Ireland
silvac@tcd.ie



Alea Ruf
University of Vienna, Austria
alea.ruf@univie.ac.at



Louise Foley
University of Limerick, Ireland
louise.foley@ul.ie